

Regional Strategic Environmental Assessment: Opportunities and Constraints in the Western Arctic

Courtney Fidler, PhD

OAIA

Ottawa

22 October 2014



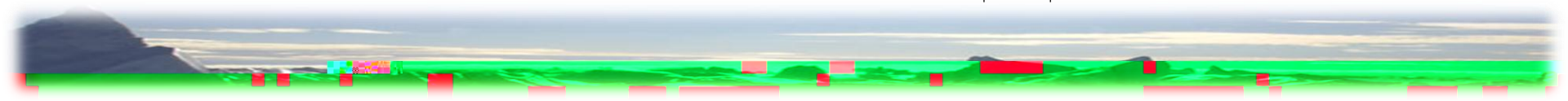
Government
of Canada

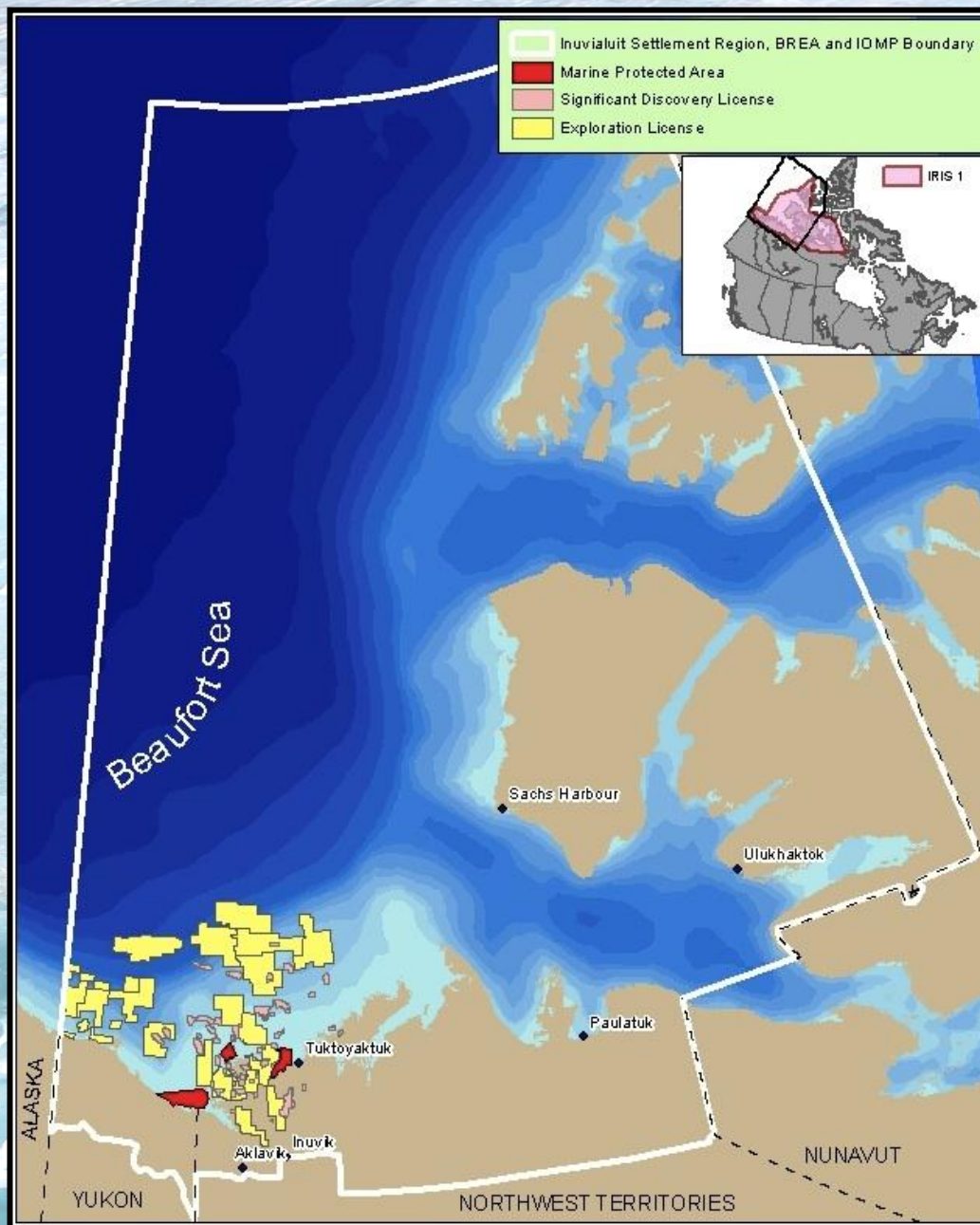
Vanier Canada
Graduate Scholarships

Gouvernement
du Canada

Bourses d'études
supérieures du Canada Vanier

Canada



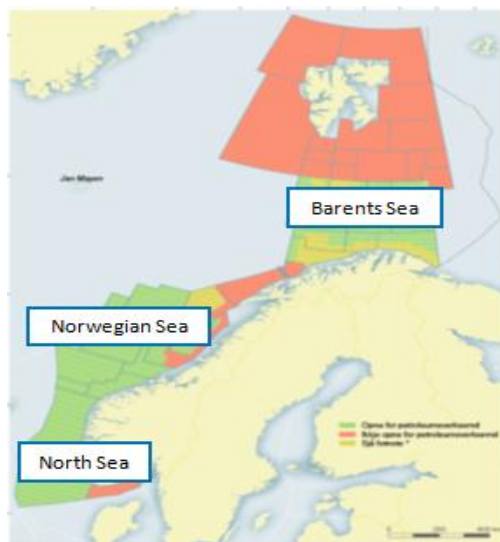


Inuvialuit Settlement Region of Canada's western Arctic
Source: Michael St. Louis, University of Saskatchewan, 2012

I. Lessons for Canada's Arctic: international offshore SEA experience

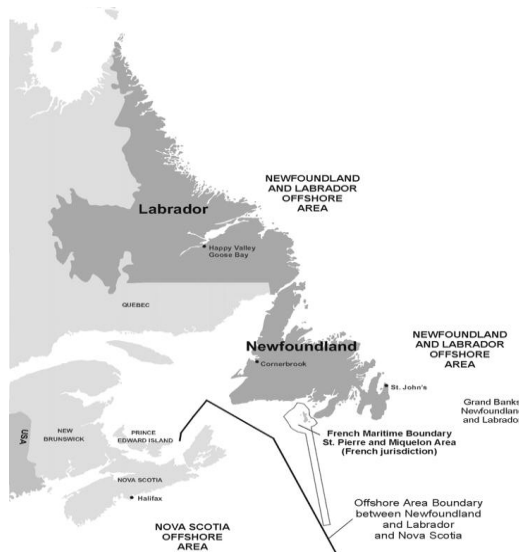
Norway

Integrated Management Plan



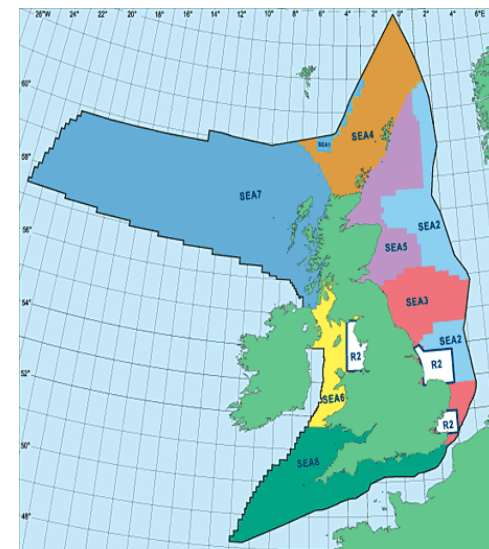
Atlantic Canada

SEA



United Kingdom

SEA



Fidler, C and B Noble. 2012. Advancing strategic environmental assessment in the offshore oil and gas sector: Lessons from Norway, Canada and the United Kingdom. *Environmental Impact Assessment Review*, 34: 12-21.

II. Stakeholder Perceptions: Current policy and planning landscape in Canada's Western Arctic, Inuvialuit Settlement Region

Integrated Oceans Management Plan (IOMP) – *planning*

Beaufort Regional Environmental Assessment (BREA) – *research (gaps)*

Integrated Regional Impact Study (IRIS) – *science*



Key Findings

| | |
|---|---|
| 1. Horizontal Integration with Management Bodies | Initiatives cannot successfully operate without an institutional framework that establishes cooperation. Greater attention must be paid to linkages between strategies and reporting systems |
| 2. Vertical Tiering | Managing resources on regional scale at strategic level, but lack of attention to ensure efforts translated to lower level. |
| 3. Guiding Vision | No overarching vision to guide and bridge initiatives. |

Fidler, C and B Noble. 2013. Stakeholder perceptions of current planning, assessment and science initiatives in Canada's Beaufort Sea. *Arctic*, 66(2): 179-190.

Challenges to Implement R-SEA

- * diversity of expectations
- * scepticism and resistance regarding alternatives
- * post implementation



Advancing R-SEA in the Beaufort Sea

If R-SEA is to become a worthwhile and effective planning process it must address:

- Context sensitivity
- Implementation and follow-up
- Good governance

Fidler, C and B Noble. 2013. Advancing regional strategic environmental assessment in Canada's western Arctic: Implementation opportunities and challenges. *Journal of Environmental Assessment Policy and Management*, 15(1).

