



# WCS Canada



## Science & Stewardship

OAIA – Oct 18 2018

Jennifer Simard  
MCFN Resource Protection

Connie O'Connor  
WCS Canada



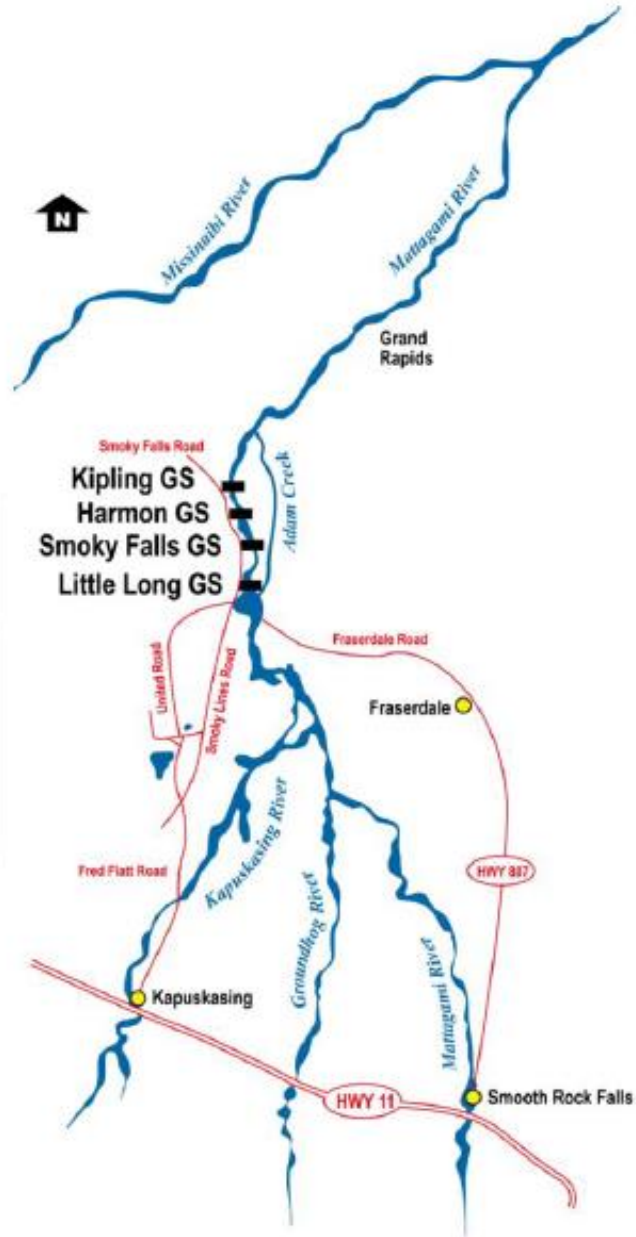
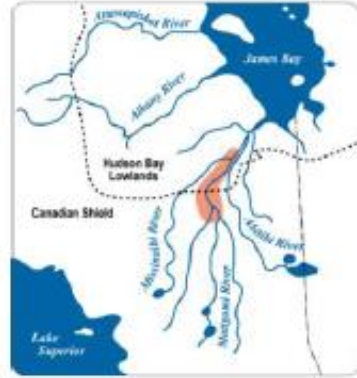
Photo © WCS Canada / Liset Cruz Font



Photo © WCS Canada / Dan Struthers







# Wâciye

“Up to the time of hydro development in this area, the Ililiwak people have always from time immemorial, travelled these waters and enjoyed and cherished our connection to the land, animals, birds, fish, trees and plant life. This plaque commemorates and honours our ancestors and the life that we receive from the land and water.”



Mîkwec

# Co-management of environment

- Provincial EA Terms and Conditions of Approval (1994), Mattagami Extensions Coordinating Council.
- Term #13-Aboriginal Knowledge
- “Ontario Hydro shall, in its studies, monitoring, and other activities in relation to the undertaking, accord to aboriginal knowledge (also known as Traditional Ecological Knowledge) a status equal to that of other forms of knowing, understanding and predicting.”

# Partnership

- Moose Cree First Nation
- Ontario Hydro (OPG) Demand Supply Plan (1990s)
- Past Grievances, MCFN Impacts
- MCFN-OPG Partnership, MCFN as “owners”



# Mattagami River pre-development



Glenbow Archives NA-726-22




# Smoky Falls





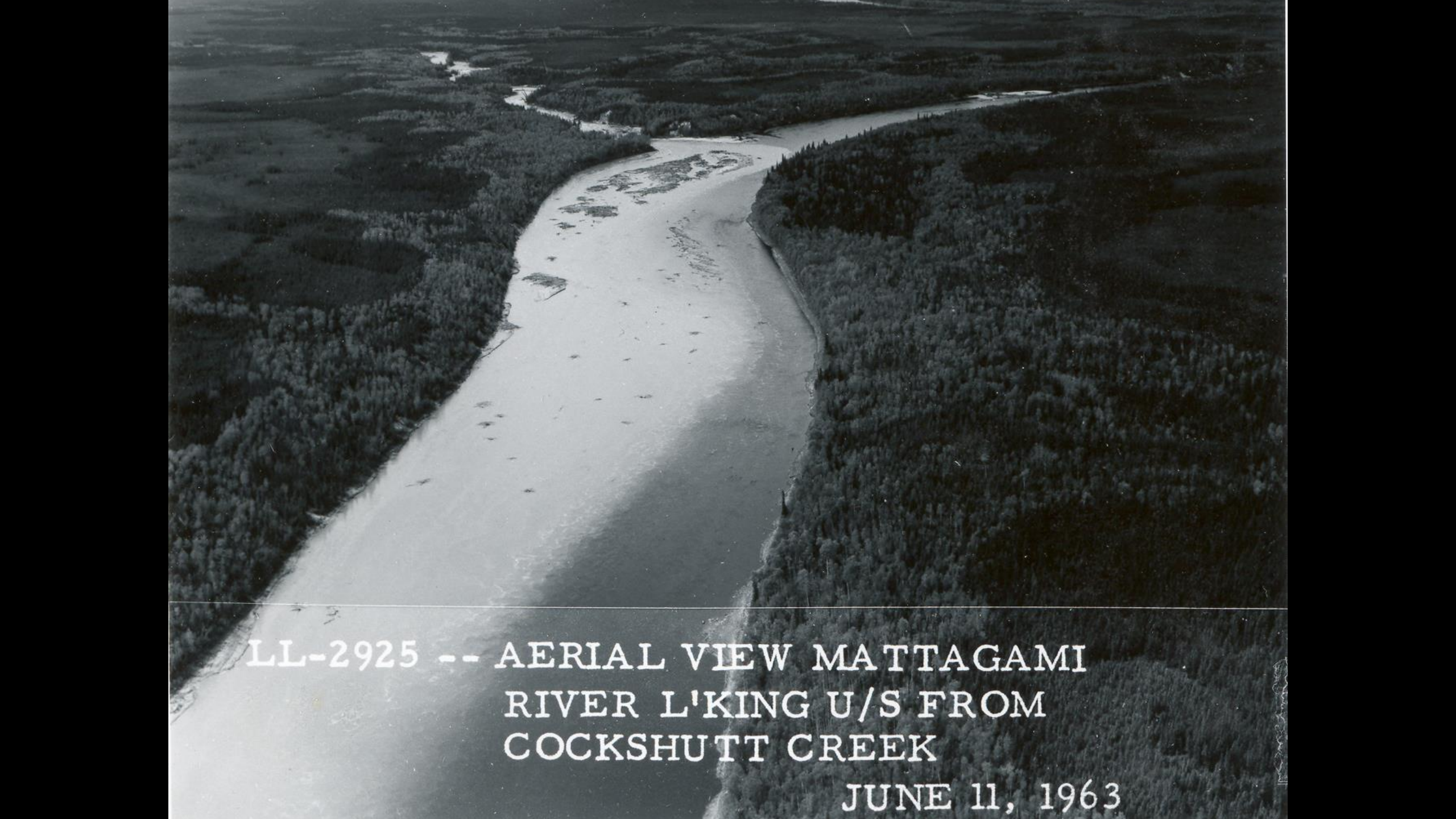
## Adam Creek Spillway



An aerial photograph showing a wide, braided river channel (Adam Creek) flowing from the top right towards the bottom left. A dam is visible in the lower-left quadrant, with water pooling behind it. The surrounding landscape is a mix of dark, forested areas and lighter, possibly agricultural or cleared land. The text is overlaid in the bottom-left corner.

LL-2045 -- AERIAL VIEW L'KING  
DOWN ADAM CREEK  
APRIL 26/63





LL-2925 -- AERIAL VIEW MATTAGAMI  
RIVER L'KING U/S FROM  
COCKSHUTT CREEK

JUNE 11, 1963



# Effects go downstream













# Unnatural water flows















Moose Cree First Nation  
Traditional Territory















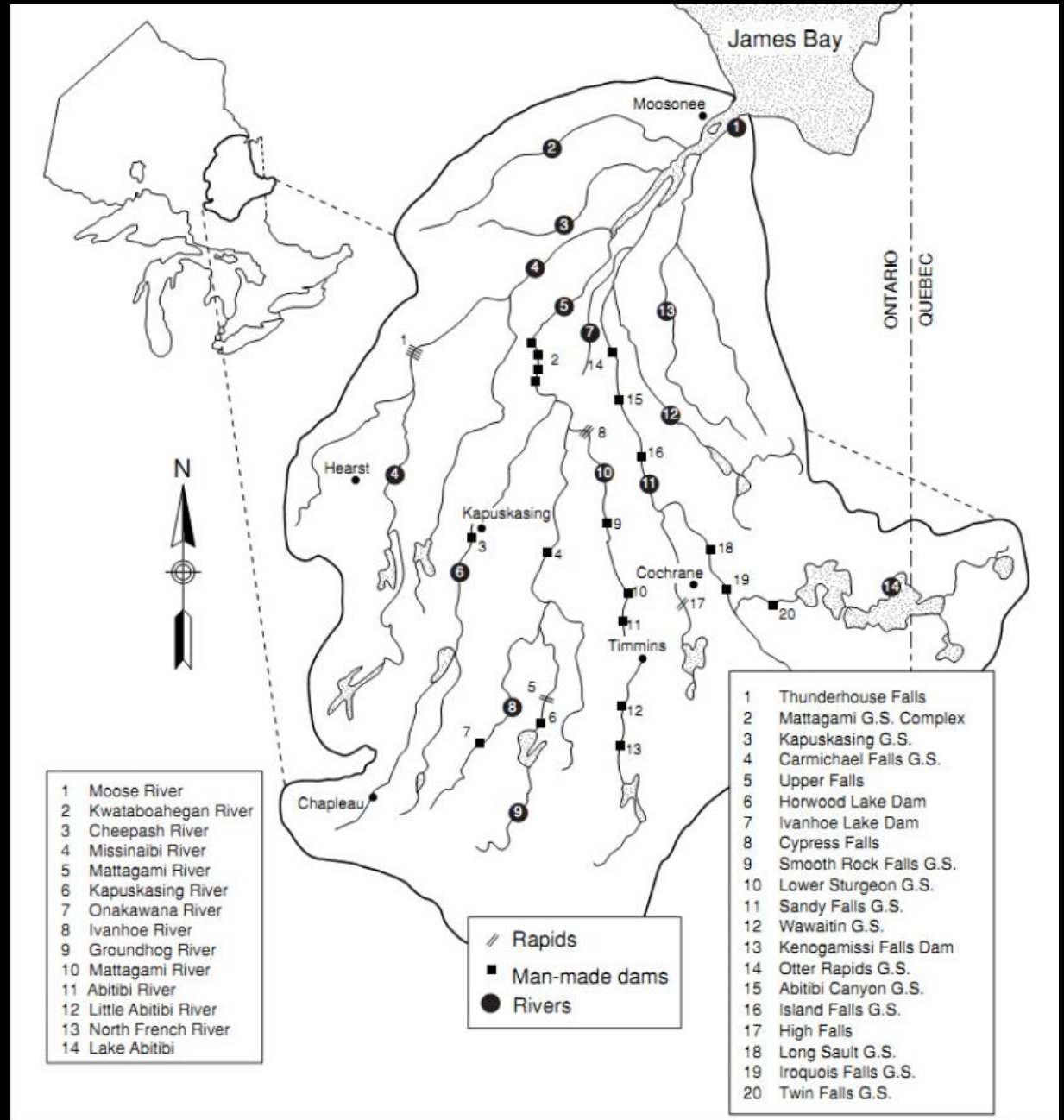
# Relationship with the land, kitaskianno



# Purpose of monitoring plan

- Satisfy EA terms and conditions
- Satisfy MCFN goals and responsibilities
- The plan will help us understand how the LMRP has and may continue to impact the watershed as well understand the health and limits of our homeland
- The plan will help us make informed resource development decisions in the future

There are over 20 dams in the Moose River basin but the largest is the Lower Mattagami Complex on the Mattagami River, north of Kapuskasing






# Protecting the Homeland, responsibilities

Partnership may go wrong but responsibilities remain

WCSC and MCFN successful collaboration that continues and is willing to evolve

- Science-based conservation organization
- Focus on intact landscapes, and species that need them
- Recognize these are lived-in landscapes
- The best solutions will combine scientific and traditional knowledge

[www.wcscanada.org](http://www.wcscanada.org)

 @WCS\_Canada

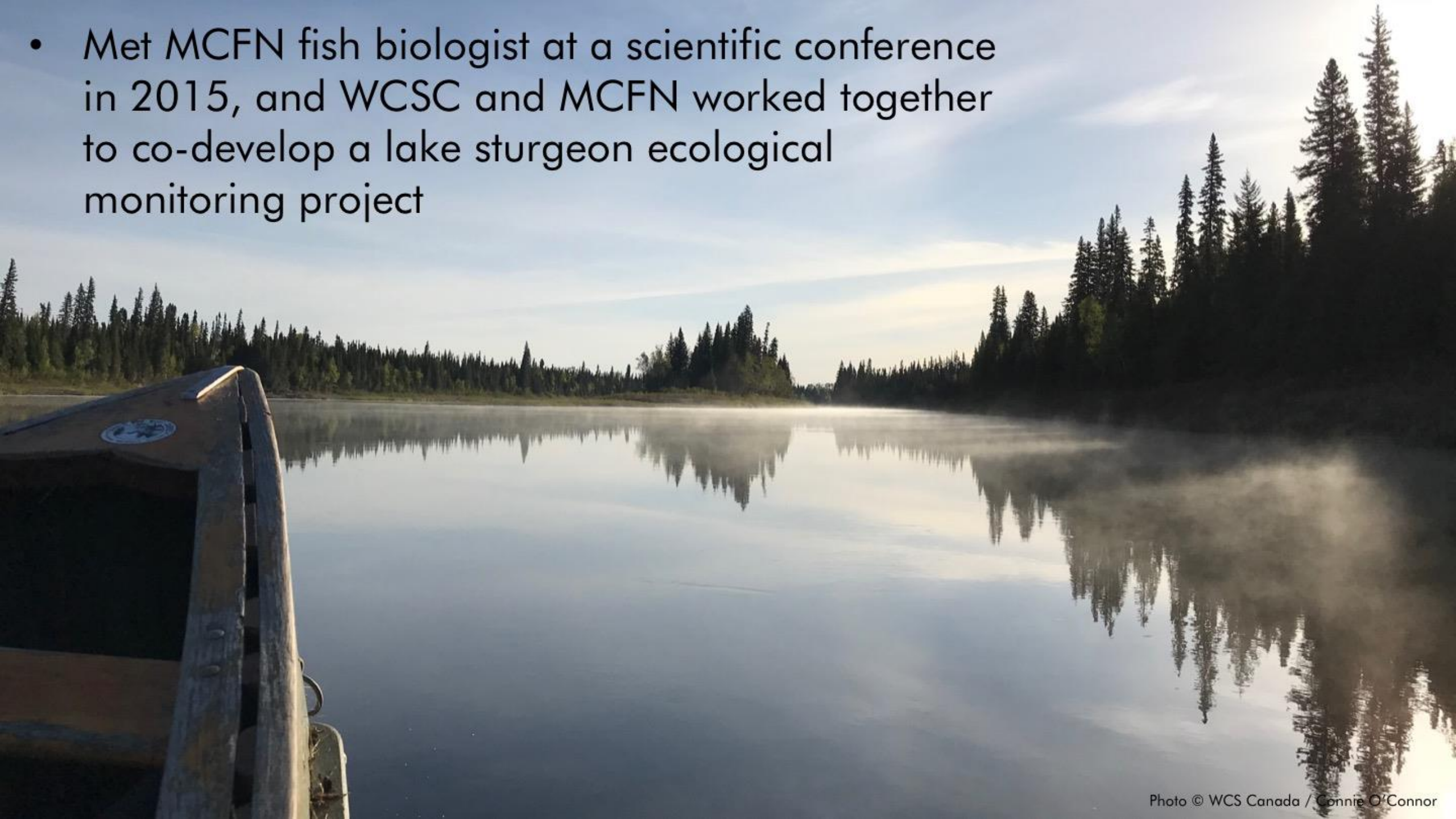
 /thewcscanada

- Lake sturgeon need intact landscapes
- Hydropower is a major threat





- Met MCFN fish biologist at a scientific conference in 2015, and WCSC and MCFN worked together to co-develop a lake sturgeon ecological monitoring project



- Co-developed the project from the earliest stages
- Created an MOU that includes co-sharing all data generated from the project
- Work together for all aspects of the project



- These processes require investment



- One fish (tag #99) was tagged below Kipling GS, and made it to the North French River!
- At least 235km



# Mîkwec!

## Thank you!

Jocelyn Cheechoo  
Billy Isaac Jr  
Stan Louttit

Abel Cheechoo  
Betty Cheechoo  
Darrell Isaac

Larry Rickard  
Fred Simard  
Justin Simard  
Ernie Sutherland  
Terry Sutherland  
Josh Sutherland

Elizabeth & John Simard

Liset Cruz Font  
Dan Struthers

North/South Consultants Inc.

THE W. GARFIELD WESTON

FOUNDATION

